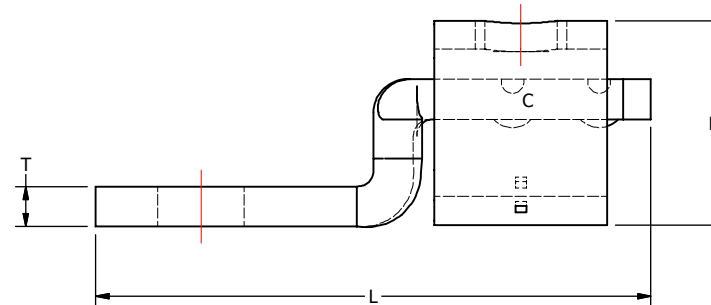
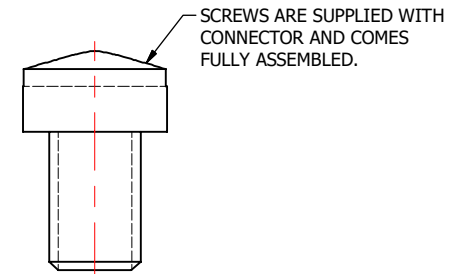
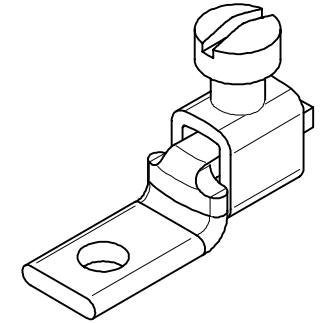
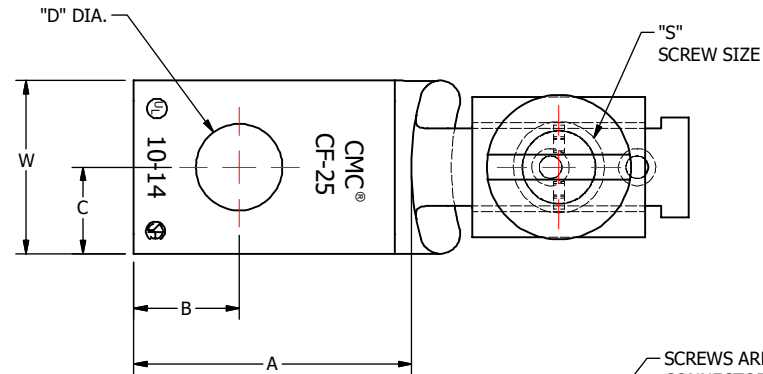


| S.NO | CATALOG NUMBER | L | H | T | W | A | B | C | D | S | CONDUCTOR SIZE |
|------|----------------|---------------|--------------|--------------|--------------|--------------|--------------|--------------|-------------|---------|----------------------|
| 1 | CF-25 | 1.00 [25] | 0.37 [9] | 0.072 [2] | 0.31 [8] | 0.50 [13] | 0.19 [5] | 0.16 [4] | 0.16 [4] | 8-32 | 14 TO 10 AWG |
| 2 | CF-125 | 1.79 [45] | 0.88 [22] | 0.13 [3] | 0.62 [16] | 0.80 [20] | 0.43 [11] | 0.31 [8] | 0.27 [7] | 3/8-24 | 1/0 TO 2 AWG |
| 3 | CF-225 | 2.56 [65] | 1.20 [30] | 0.13 [3] | 1.00 [25] | 1.13 [29] | 0.50 [13] | 0.50 [13] | 0.34 [9] | 7/16-20 | 4/0 TO 2 AWG |
| 4 | CF-300 | 3.25 [83] | 1.41 [36] | .19 [5] | 1.00 [25] | 1.44 [37] | 0.62 [16] | 0.50 [13] | .41 [10] | 5/8-18 | 350 Kcmil TO 1/0 AWG |
| 5 | CF-400 | 4.31 [109] | 1.56 [40] | .19 [5] | 1.50 [38] | 2.00 [51] | 0.94 [24] | 0.75 [19] | .41 [10] | 5/8-18 | 500 Kcmil TO 1/0 AWG |



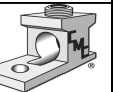
FINISH: CLEAN ONLY
MATERIAL: COPPER

| | | | | | | | | | |
|------|---------------------|-----|------|----------|----|---|--------------------------|--|------------------------|
| | | | | | | TO ORDER CMC PRODUCTS CALL 1-513-860-4455 | DRAWN BY: TS 07-19-19 | NAME OF PART: SOLDERLESS LUG ASSEMBLY | CAT. NO.: SEE TABLE |
| | | | | | | FOR PRODUCT INFO: http://www.cmcugs.com | CHECKED BY: | DWG NO: C00497020-S (CHARTED) | B |
| A | NEW DRAWING CREATED | | | 07-19-19 | TS | | DRAWING NOT TO SCALE | | SHEET NO: 1 OF 1 |
| REV. | DESCRIPTION | ECN | DATE | INIT. | | | | | |

THIS INFORMATION IS PROPRIETARY TO CONNECTOR MFG. CO. AND IS NOT TO BE DISCLOSED OUTSIDE OF CONNECTOR MFG. CO. WITHOUT A CONFIDENTIALITY AGREEMENT



CONNECTOR MANUFACTURING CO.



HAMILTON, OHIO